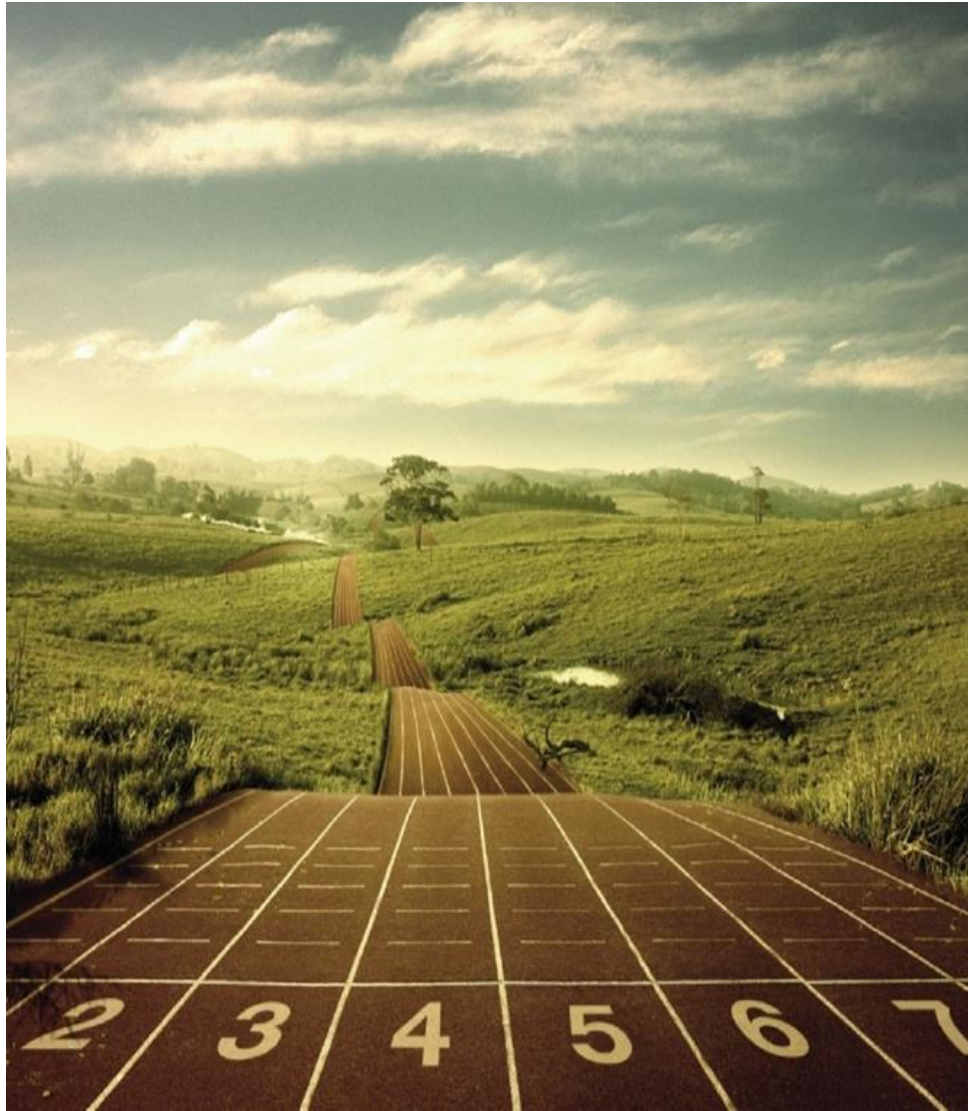




Building sustainable performance pathways



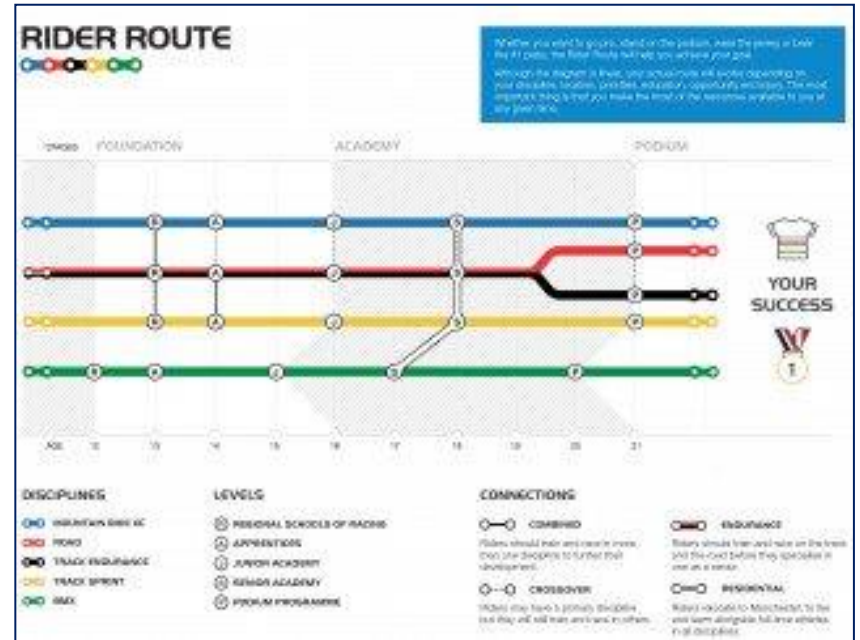




PERFORMANCE PATHWAY VISUAL



KEY
A Application
S Selection





Talent Identification Initiatives in the UK

2014 



2012



2011



2009

TALENT 2012



2008



2007



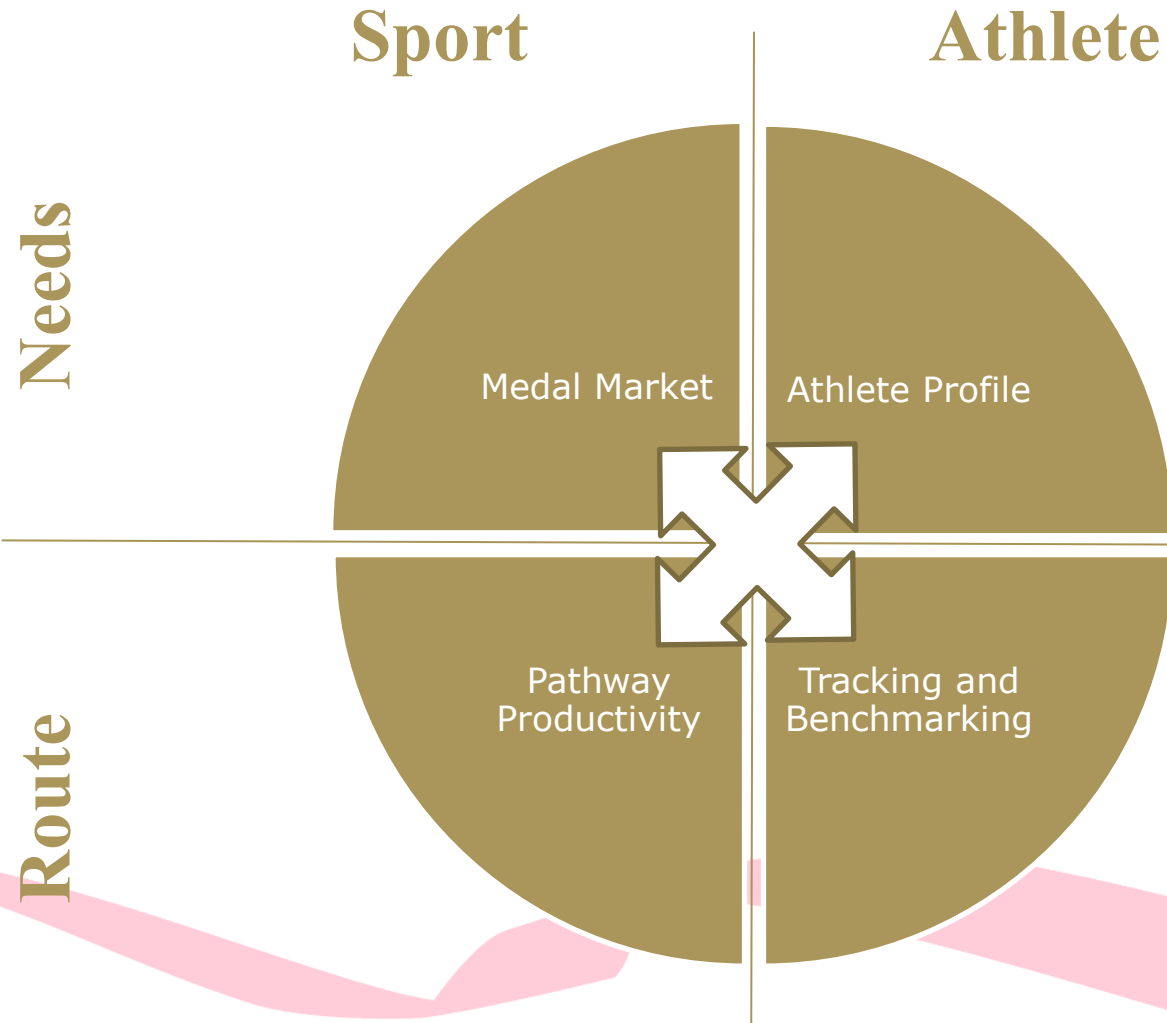


Masterclass 1

Talent Profiling

and Confirmation





Performance Pathway Profiling





My mission in life is to run the best swimming club in the world, and this can be achieved by doing the little things right every day - by creating the right environment in which people can excel.

PERFORMANCE

PATHWAY

TEAM

Community of Practice

In a sustainable pathway, each layer should be working for the one above and finding the right athlete is not enough, they need the right coach in the right environment